

MS Rooms Installation and VR experience

# OPT.B TAPERING WALLS

PARTITION SET UP

# MS Rooms Installation and VR experience

## Tapering wall set up

### KITCHEN OVERVIEW



#### SAIL A/KITCHEN SIDE



KITCHEN OVERVIEW

#### SYMPTOM ITEMS

**RECIPE BOOK:** People with MS face difficulties concentrating and memory issues. They may need much more time for simple tasks, like cooking. (SIGNAGE: Bookmark)

**HEAVY MUGS/ UNBALANCED TRAY:** Fatigue is one of the most common symptoms of MS. It's an overwhelming tiredness that affects people in different ways and may change daily or even hourly. Just imagine your arm feels so heavy and tired that you can't even pick up a cup of coffee. (SIGNAGE: A4 print displayed by a Plexi holder)

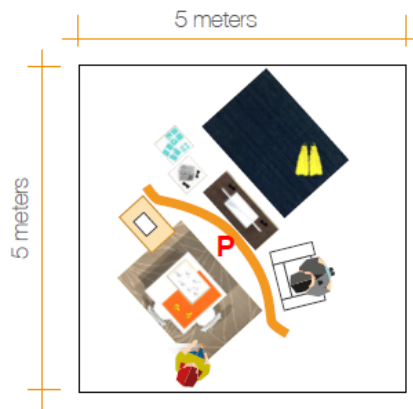
#### STAGING ITEMS

- 1 Leaves Carpet, 1 White table, 2 chairs,
- 1 table cloth, and kitchen towels
- 1 tray with 2 glasses and 1 caraffe,
- 2 heavy mugs
- 1 wooden cart + recipe book

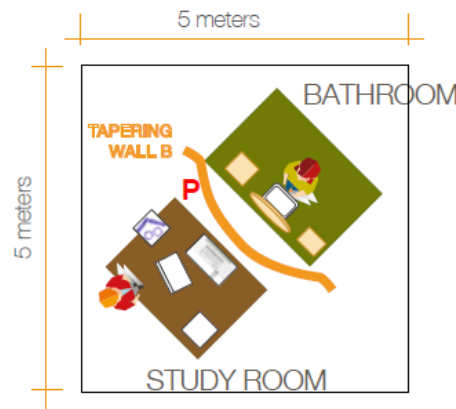
# MS Rooms Installation and VR experience

## Tapering wall set up - Floor plan and dimensions specs

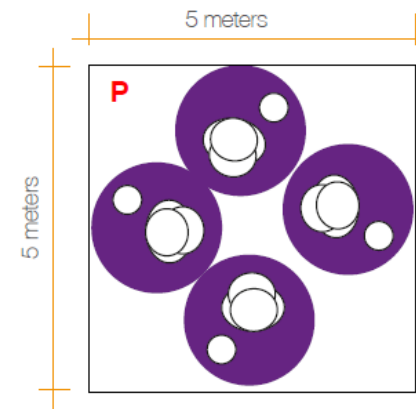
Installation for 4 MS rooms (Kitchen and living room/Study Room and Bathroom) and 4 VR experience stations



MS ROOMS Kitchen/Living room section floor plan



MS ROOMS Study/Bathroom section floor plan



VR STATIONS floor plan

**P** ELECTRICAL SOCKET

# MS Rooms Installation and VR experience

## Tapering wall set up

### LIVING ROOM OVERVIEW



#### SYMPTOM ITEMS

**TV HALF DEFINITION :** Half vision can be one of the symptoms people with MS have to deal with when they have scaring in the optic nerve. Check out the TV to see what it's like. (SIGNAGE: TV's sticker)

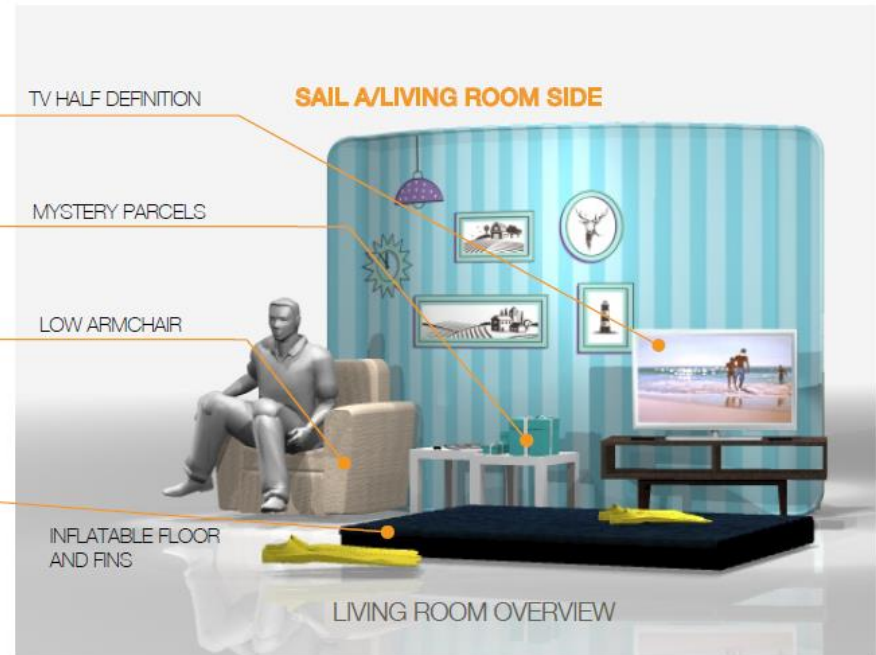
**MYSTERY PARCELS:** People with MS may experience a whole range of cognitive problems, like difficulties concentrating and short-term memory issues. Imagine ordering something, then when it shows up, you don't remember what you ordered. (SIGNAGE: A4 print displayed by a Plexi holder)

**LOW ARMCHAIR:** Fatigue is not just an ordinary tiredness, like you might get at the end of a hard day's work. It's as an overwhelming sense of tiredness that often occurs after very little activity. It's like when you sit down and can't get up anymore. (SIGNAGE: A4 print displayed by a Plexi holder)

**INFLATABLE FLOOR AND FINS:** MS can affect certain parts of the body that are required to work in coordination in order for the body to balance properly. Symptoms might mean people with MS are wobbly on their feet from time to time, or they might need to move with more care than before to avoid losing balance. It can feel like walking on an uneven floor. (SIGNAGE: Floor's panel)

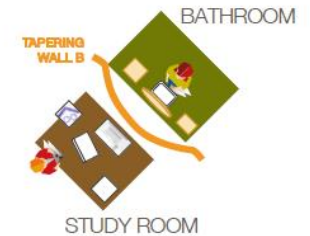
#### STAGING ITEMS

- 1 Inflatable mattress + Blue carpet and 2 fins
- 1 Tv cupboard + 1 Smart TV
- 1 Electrical outlet oointainer
- 1 LowArmchair and cushions
- 1 low table with 2 half vision glasses
- 1 low table with 3 mistery parcels + 1 Floor Lamp



# MS Rooms Installation and VR experience

## Tapering wall set up STUDY ROOM OVERVIEW



### SYMPTOM ITEMS

- **JUMBLED KEYBOARD:** Feeling jumbled? People with MS may find that their cognitive powers are diminished. They may have difficulties finding the right word or understanding and using language. Imagine you can't spell properly anymore.  
(SIGNAGE: Monitor sticker)
- **ALICE BOOK:** Imagine your brain feels foggy and you can't focus properly. People suffering from MS face all kinds of cognitive problems, difficulties concentrating and memory issues. Some may find themselves reading the same page over and over again because by the time they finish reading it, they have forgotten what it said.  
(SIGNAGE: Bookmark)
- **ANKLE WEIGHTS:** Fatigue in MS is not an ordinary tiredness. Your limbs can feel heavy and you can be exhausted after very little activity. People with MS say it feels a bit like wading through quicksand.  
(SIGNAGE: A4 print displayed by a Plexi holder or Wall panel)

### STAGING ITEMS

- 1 Leaves carpet
- 1 desk + 1 chair + 1 computer PC + 1 keyboard
- 1 low table with ankle weights
- 1 low table with Alice book
- 1 trash basket + 1 floor lamp

# MS Rooms Installation and VR experience

## Tapering wall set up BATHROOM OVERVIEW



### SYMPTOM ITEMS

**BLURRY MIRROR WITH INFRARED HEATER:** Many people with MS experience a temporary worsening of their symptoms when the weather is very hot or humid or when taking hot showers or baths. Just imagine your symptoms flare up after getting out of the shower and you can't see yourself properly anymore. (SIGNAGE: Mirror sticker)

**NEWSPAPER:** People with MS may find that their cognitive powers are diminished. They may have difficulties finding the right word or even struggle to understand and use language. You know what it's like when you just can't find the right word. (SIGNAGE: A4 print displayed by a Plexi holder)

### STAGING ITEMS

- 1 green carpet 2,2x1,5mt
- 1 sink + 1 mirror
- 1 Infrared Heater
- 1 wooden basket + 1 wooden shelves unit
- 2 news papers
- Towels and sink accessories



# MS Rooms Installation and VR experience

## VR STATIONS Overview

### VR EXPERIENCE KIT INCLUDES:

4 x Samsung GearVR headsets (original consumer 1.0 units = white)

4 x charging docks circular charging stations + cables (standard

Android USB charging cables) + US plugs /EU plugs

4 x headphones (Sony - wired - noise cancelling headphones - white - require 1 AAA battery in each headset for noise cancelling - on/off switch on right ear cup)

4 x Samsung S7 Edge smartphones with software installed (Latest version to be installed ready for January 2017 - (phones are boxed)

(SIGNAGE: Tent Cards + 2 self standing panels)